



## THRESHFIELD PRIMARY SCHOOL CURRICULUM COVERAGE

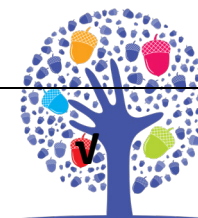


### Geography Curriculum Coverage

Year 1/2	Year A			Year B		
	Autumn	Spring	Summer	Autumn	Spring	Summer
National Curriculum Objectives/Unit	Our Local Environment	Investigating the UK	Ocean Plastic	Our School & It's Surroundings	Sydney Here We Come!	Investigating the World.
<b>Locational Knowledge</b>						
Name and locate the world's seven continents and five oceans (LK1)			✓			✓
Name, locate and identify characteristics of the four countries and capital cities of the United Kingdom and its surrounding seas (LK2)		✓				✓
<b>Place Knowledge</b>						
Understand geographical similarities and differences through studying the human and physical geography of a small area of the United Kingdom, and of a small area in a contrasting non-European country (PK1)		✓		✓	✓	
<b>Human and Physical Geography</b>						
Identify seasonal and daily weather patterns in the United Kingdom and the location of hot and cold areas of the world in relation to the Equator and the North and South Poles (H&P1)					✓	✓



## THRESHFIELD PRIMARY SCHOOL CURRICULUM COVERAGE



Use basic geographical vocabulary to refer to: Key physical features, including: beach, cliff, coast, forest, hill, mountain, sea, ocean, river, soil, valley, vegetation, season and weather (H&P2)	✓	✓	✓	✓	✓	✓
Use basic geographical vocabulary to refer to: Key human features, including: city, town, village, factory, farm, house, office, port, harbour and shop (H&P3)	✓	✓		✓	✓	✓
<b>Geographical skills and fieldwork</b>						
Use world maps, atlases and globes to identify the United Kingdom and its countries, as well as the countries, continents and oceans studied at this key stage (GS&F1)	✓	✓	✓	✓	✓	✓
Use simple compass directions (North, South, East and West) and locational and directional language [for example, near and far; left and right], to describe the location of features and routes on a map (GS&F2)	✓		✓	✓	✓	✓
Use aerial photographs and plan perspectives to recognise landmarks and basic human and physical features; devise a simple map; and use and construct basic symbols in a key (GS&F3)	✓		✓	✓	✓	✓
Use simple fieldwork and observational skills to study the geography of their school and its grounds and the key human and physical features of its surrounding environment (GS&F4)	✓			✓		



## THRESHFIELD PRIMARY SCHOOL CURRICULUM COVERAGE



Year 3/4	Year A			Year B		
	Autumn	Spring	Summer	Autumn	Spring	Summer
National Curriculum Objectives/Unit	Investigating Longitude and Latitude	Rivers	Ocean Plastics	Land Use Over Time	Mountains and Volcanoes	Investigating Major World Cities
<b>Locational Knowledge</b>						
Locate the world's countries, using maps to focus on Europe (including the location of Russia) and North and South America, concentrating on their environmental regions, key physical and human characteristics, countries, and major cities (LK1)	✓	✓	✓	✓	✓	✓
Name and locate countries and cities of the United Kingdom, geographical regions and their identifying human and physical characteristics, key topographical features (including hills, mountains, coasts and rivers), and land-use patterns; and understand how some of these aspects have changed over time (LK2)		✓		✓		✓
Identify the position and significance of latitude, longitude, Equator, Northern Hemisphere, Southern Hemisphere, the Tropics of Cancer and Capricorn, Arctic and Antarctic Circle, the Prime/Greenwich Meridian and time zones (including day and night) (LK3)	✓					
<b>Place Knowledge</b>						
Understand geographical similarities and differences through the study of human and physical geography of a region of the United Kingdom, a region in a European country, and a region within North or South America (PK1)		✓	✓	✓	✓	✓



## THRESHFIELD PRIMARY SCHOOL CURRICULUM COVERAGE



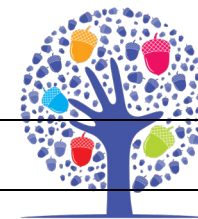
### Human and Physical Geography



Describe and understand key aspects of: physical geography, including: climate zones, biomes and vegetation belts, rivers, mountains, volcanoes and earthquakes, and the water cycle (HP1)	✓	✓	✓	✓	✓	✓
Describe and understand key aspects of: human geography, including: types of settlement and land use. Economic activity including trade links, and the distribution of natural resources including energy, food, minerals and water (HP2)	✓			✓		✓
<b>Geographical skills and fieldwork</b>						
Use maps, atlases, globes and digital/computer mapping to locate countries and describe features studied (GS&F1)	✓	✓	✓	✓	✓	✓
Use the eight points of a compass, four and six-figure grid references, symbols and key (including the use of Ordnance Survey maps) to build their knowledge of the United Kingdom and the wider world (GS&F2)				✓		✓
Use fieldwork to observe, measure, record and present the human and physical features in the local area using a range of methods, including sketch maps, plans and graphs, and digital technologies (GS&F3) <b>N.B – Other opportunities to develop these skills and knowledge through planned enrichment opportunities e.g YDNP fieldwork days.</b>		✓	✓	✓		



## THRESHFIELD PRIMARY SCHOOL CURRICULUM COVERAGE





 <b>Year 5/6</b>	<b>Year A</b>			<b>Year B</b>			
	<b>Autumn</b>	<b>Spring</b>	<b>Summer</b>	<b>Autumn</b>	<b>Spring</b>	<b>Summer</b>	
<b>National Curriculum Objectives/Unit</b>	<b>World Trade</b>	<b>Middle East</b>	<b>Ocean Plastics</b>	<b>Climate and Biomes</b>	<b>North America</b>	<b>Local Area Study: Fieldwork and Mapping Skills</b>	
<b>Locational Knowledge</b>							
Locate the world's countries, using maps to focus on Europe (including the location of Russia) and North and South America, concentrating on their environmental regions, key physical and human characteristics, countries, and major cities (LK1)	✓	✓	✓	✓	✓		
Name and locate countries and cities of the United Kingdom, geographical regions and their identifying human and physical characteristics, key topographical features (including hills, mountains, coasts and rivers), and land-use patterns; and understand how some of these aspects have changed over time (LK2)	✓		✓	✓			✓
Identify the position and significance of latitude, longitude, Equator, Northern Hemisphere, Southern Hemisphere, the Tropics of Cancer and Capricorn, Arctic and Antarctic Circle, the Prime/Greenwich Meridian and time zones (including day and night) (LK3)		✓		✓	✓		
<b>Place Knowledge</b>							
Understand geographical similarities and differences through the study of human and physical geography of a region of the United Kingdom, a region in a European country, and a region within North or South America (PK1)	✓	✓		✓	✓		✓
<b>Human and Physical Geography</b>							



## THRESHFIELD PRIMARY SCHOOL CURRICULUM COVERAGE



Describe and understand key aspects of: physical geography, including: climate zones, biomes and vegetation belts, rivers, mountains, volcanoes and earthquakes, and the water cycle (HP1)		✓	✓	✓	✓	
Describe and understand key aspects of: human geography, including: types of settlement and land use. Economic activity including trade links, and the distribution of natural resources including energy, food, minerals and water (HP2)	✓	✓		✓		✓
<b>Geographical skills and fieldwork</b>						
Use maps, atlases, globes and digital/computer mapping to locate countries and describe features studied (GS&F1)	✓	✓	✓	✓	✓	✓
Use the eight points of a compass, four and six-figure grid references, symbols and key (including the use of Ordnance Survey maps) to build their knowledge of the United Kingdom and the wider world (GS&F2)	✓	✓	✓	✓	✓	✓
Use fieldwork to observe, measure, record and present the human and physical features in the local area using a range of methods, including sketch maps, plans and graphs, and digital technologies (GS&F3) <b>N.B – Other opportunities to develop these skills and knowledge through planned enrichment opportunities e.g YDNP fieldwork days.</b>	✓	✓	✓			✓